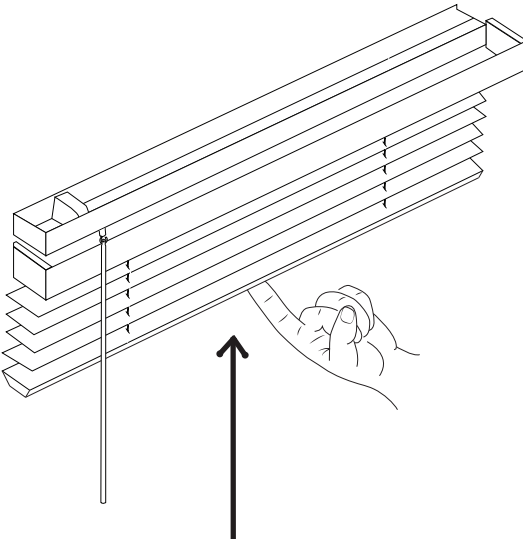
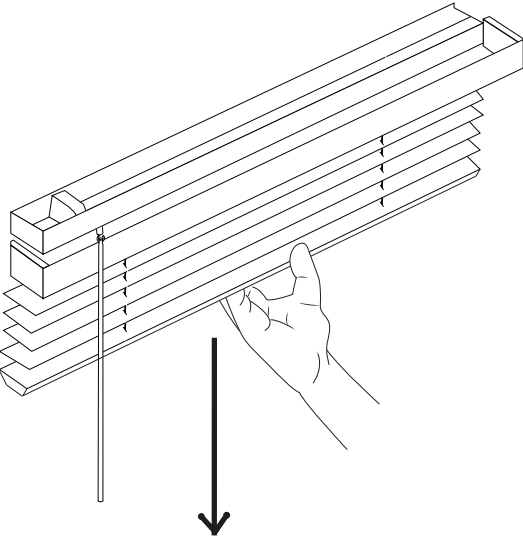


Operation



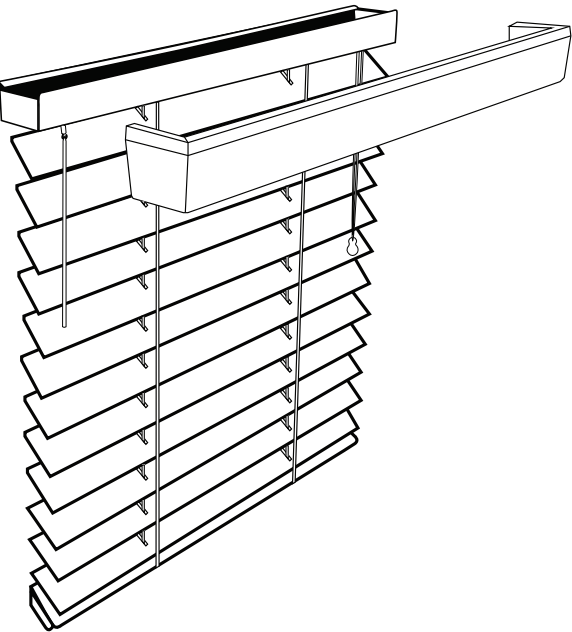
Care and Cleaning

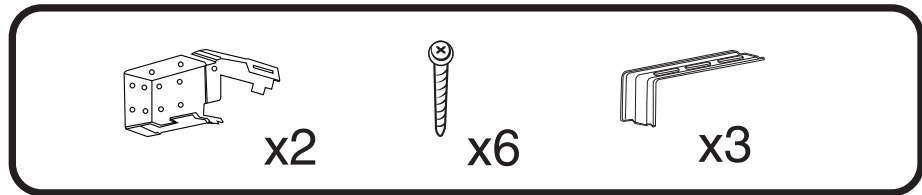
Minimal care and cleaning is needed to maintain the beauty of your blinds.

To Vacuum: Use Brush or Dust head attachment.

To Dust: Use soft, clean cloth.

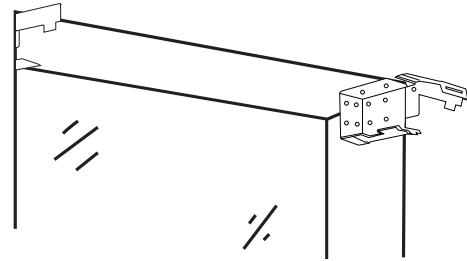
Installation Instructions for Wood Blinds



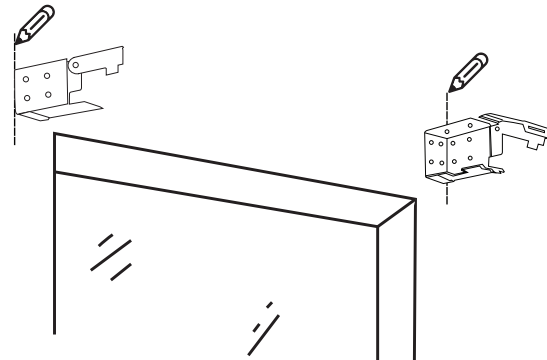


1

Inside Mount

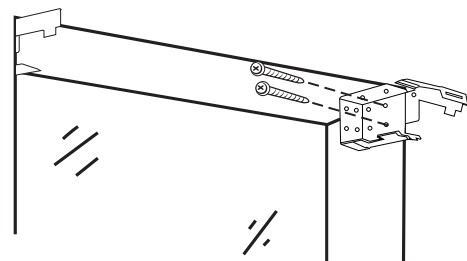


Outside Mount

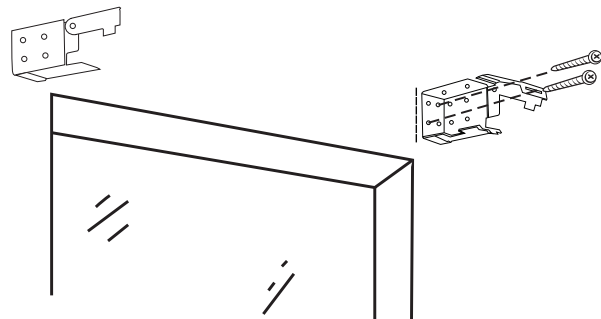


2

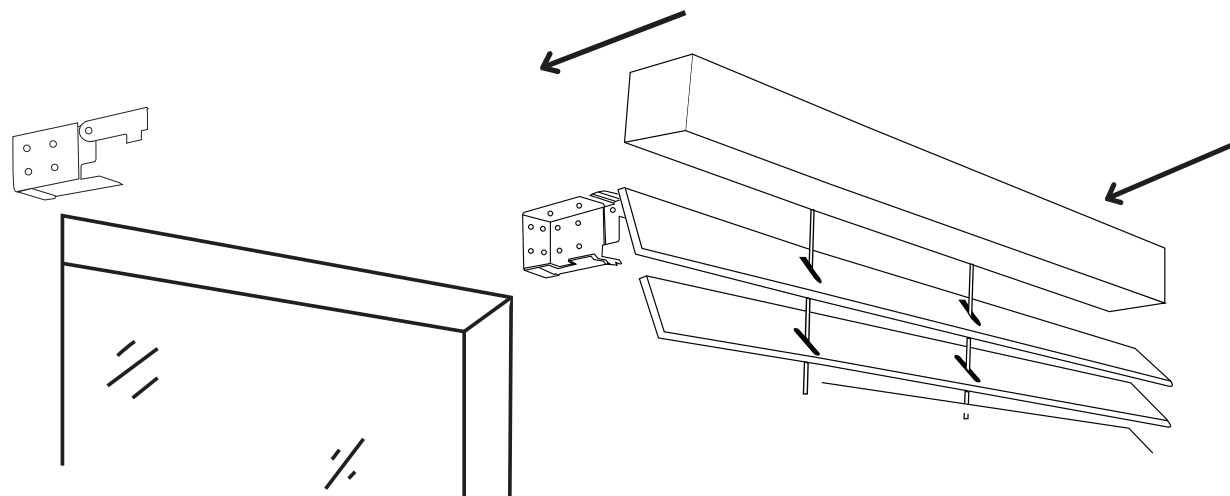
Inside Mount



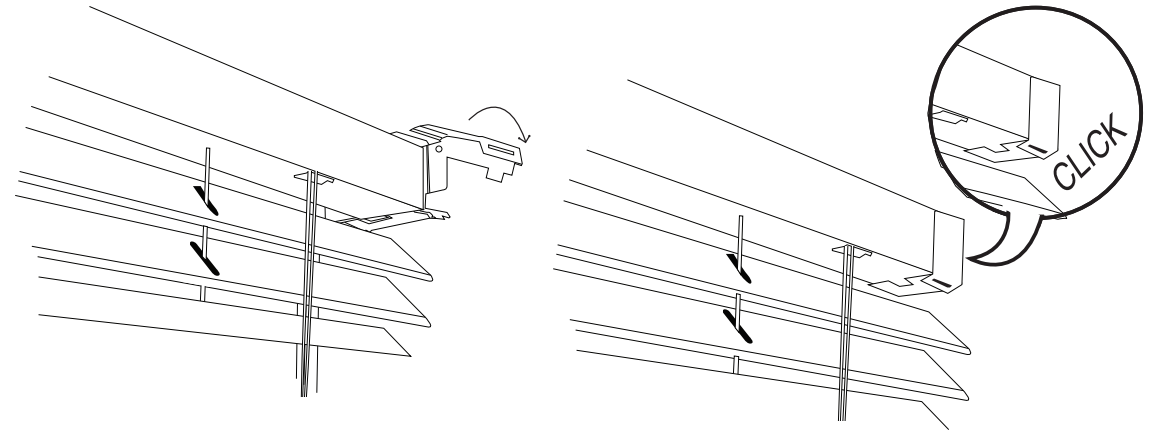
Outside Mount



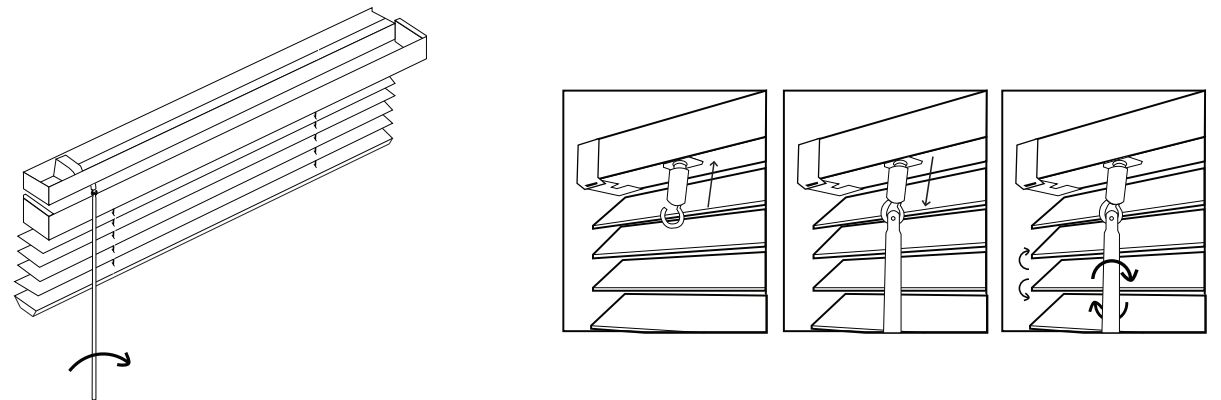
3



4

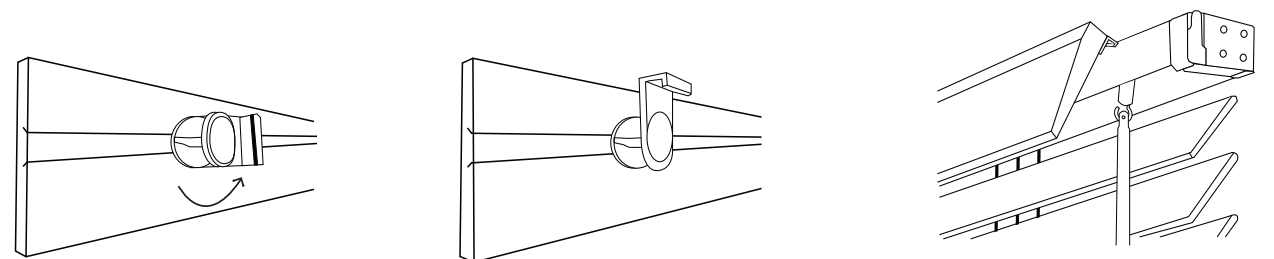


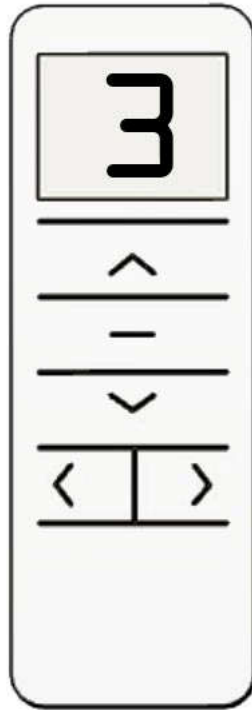
5



6

Valance Assembly





Motorized Blinds

Operating Instructions for Tilt and Lift Motors

To tilt the slats in small steps, click the **UP** or **Down** button. With each click, the slats will move one step. To raise or lower the blind, **press and hold** for a couple of seconds the **UP** or **DOWN** button. To stop the movement at any time, press the button [-]

General Information

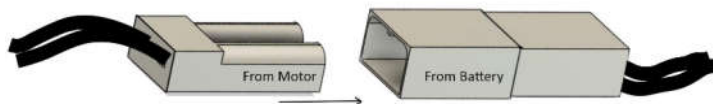
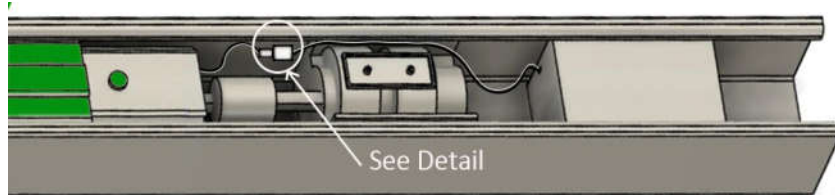
Tilt-and-Lift motors will let you tilt (orient) the wood slats to control the light getting into the room and also, raise or lower your blind. When lifting or lowering your blind, the slats will be tilted to the “closed” position.

You will not require an electrician to install your blind because it operates with a rechargeable battery installed inside the steel headrail.

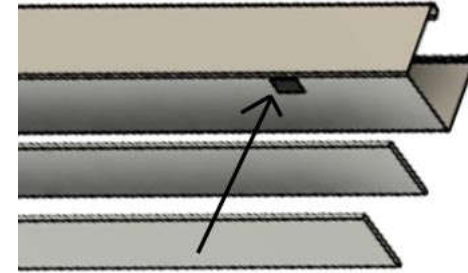
A remote control is necessary to operate your blinds. One remote can operate up to 15 blinds. If you ordered several motorized blinds, each blind is factory-assigned to a Channel Number in the remote control.

Battery Connection

For safety reasons, the battery is not connected to the motor when it leaves the factory. The first step is to connect the cable coming out from the battery to the cable from the motor. **Both cables are marked with a green sticker.**



Recharge Battery



The battery is shipped partially charged. It is a good idea to fully recharge it before installing the blind in the brackets. Connect the USB connector from the Charger to the Battery USB port in the **right hand side** of the head rail as shown.

Remote

Your Remote is already programmed to operate your blind(s) in the Channel you requested in your order. Each blind has a sticker in the front of the headrail showing the Channel Number that was programmed on your remote. Channel 0 (zero) operates **all** blinds at the same time. To select the Channel related to your blind, press the buttons [< >] until you see the desired Channel in the screen.

The remote communicates to the motor with radio frequency and it is not necessary to point it directly to the blind. If you lose your remote, you will have to order a replacement.

Remote Battery

To start using your Remote, you need to remove the plastic protection **under** the battery. To access the battery, slightly push and slide down the cover in the back of the Remote. Pull the transparent tab to remove the protection. Use only a CR 2450 Lithium battery if you need to replace it.